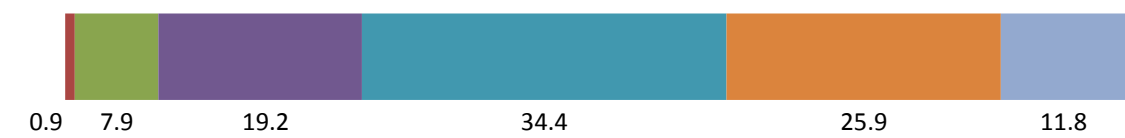
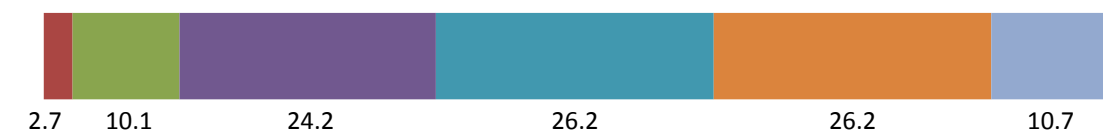


like a *kansobun* (personal opinion/experience)... about data and theories.

Students whose answers disagree here are saying "I think the writing university students in English-speaking countries do is like a *kansobun* – mainly personal opinion and personal experience – rather than about data or theories."



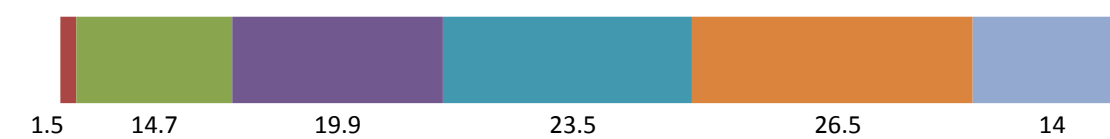
Strong opinions only (top and bottom quartiles) on a set of items indicating whether a student is oriented toward Japanese values and media, or looks outside Japan for values, and seeks to "escape". "Outward looking" and seeking escape (n=149) vs.



students who may prefer Japan more and may be more domestically oriented (n=130). The p-value here is 5.21E-005 and the phi-coefficient/Cramer's V is: 0.242



Strong opinions only (the top and bottom quartiles) of reactions to a set of items with a combined score indicating a student's likelihood of being oriented toward actually studying abroad and preparing for it (n=136) vs.



less interest and fewer plans for SA (n=131). The p-value here is 0.00327 and the phi-coefficient/Cramer's V is: 0.18



Students who feel rather strongly that US students wouldn't be surprised by a lecturer (n=98) vs.



students who feel rather strongly that US students would think of a lecturer as strange and unusual (n=99). The p-value here is 0.001998 and the phi-coefficient/Cramer's V is: 0.22



Stronger tendency to be willing to ask a teacher for clarification during class (n=106) vs.



students who say they'd be quite unlikely to ask for clarification (n=93). The p-value here is 0.009834 and the phi-coefficient/Cramer's V is: 0.183

