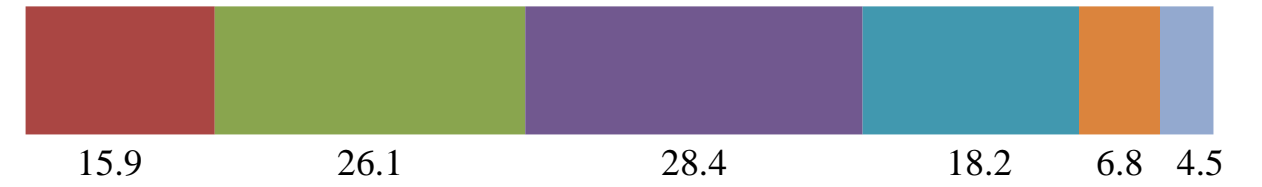


not uncommon. | uncommon.

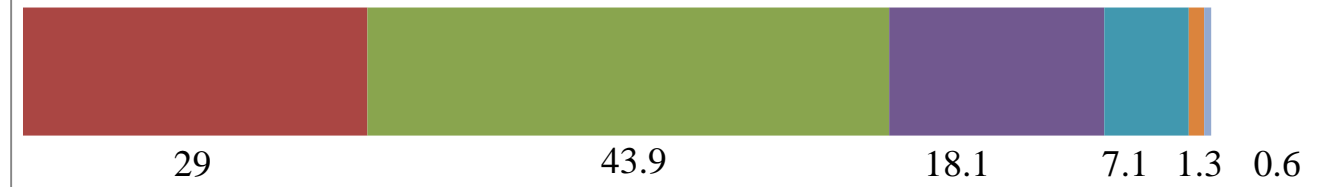
Pair work is an uncommon type of classwork in US classes.



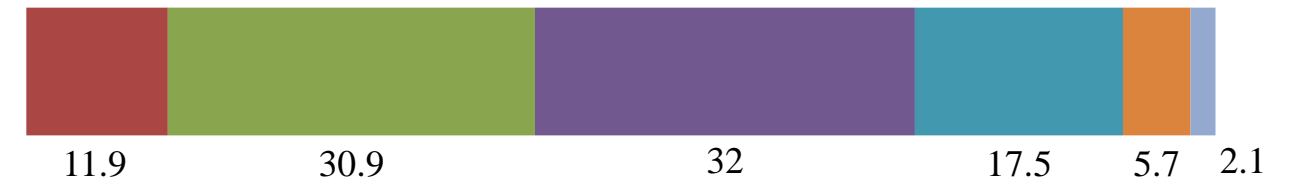
Students who feel rather strongly that lecture is common in US uni classes (n=88) vs.



students who think rather strongly that lecture is uncommon (n=155). The p-value here is 3.41E-005 and the phi-coefficient/Cramer's V is: 0.266



Students who think lecture is common in US uni classes (n=194) vs.



students who think lecture is uncommon (n=274). The p-value here is 0.00264 and the phi-coefficient/Cramer's V is: 0.139

